

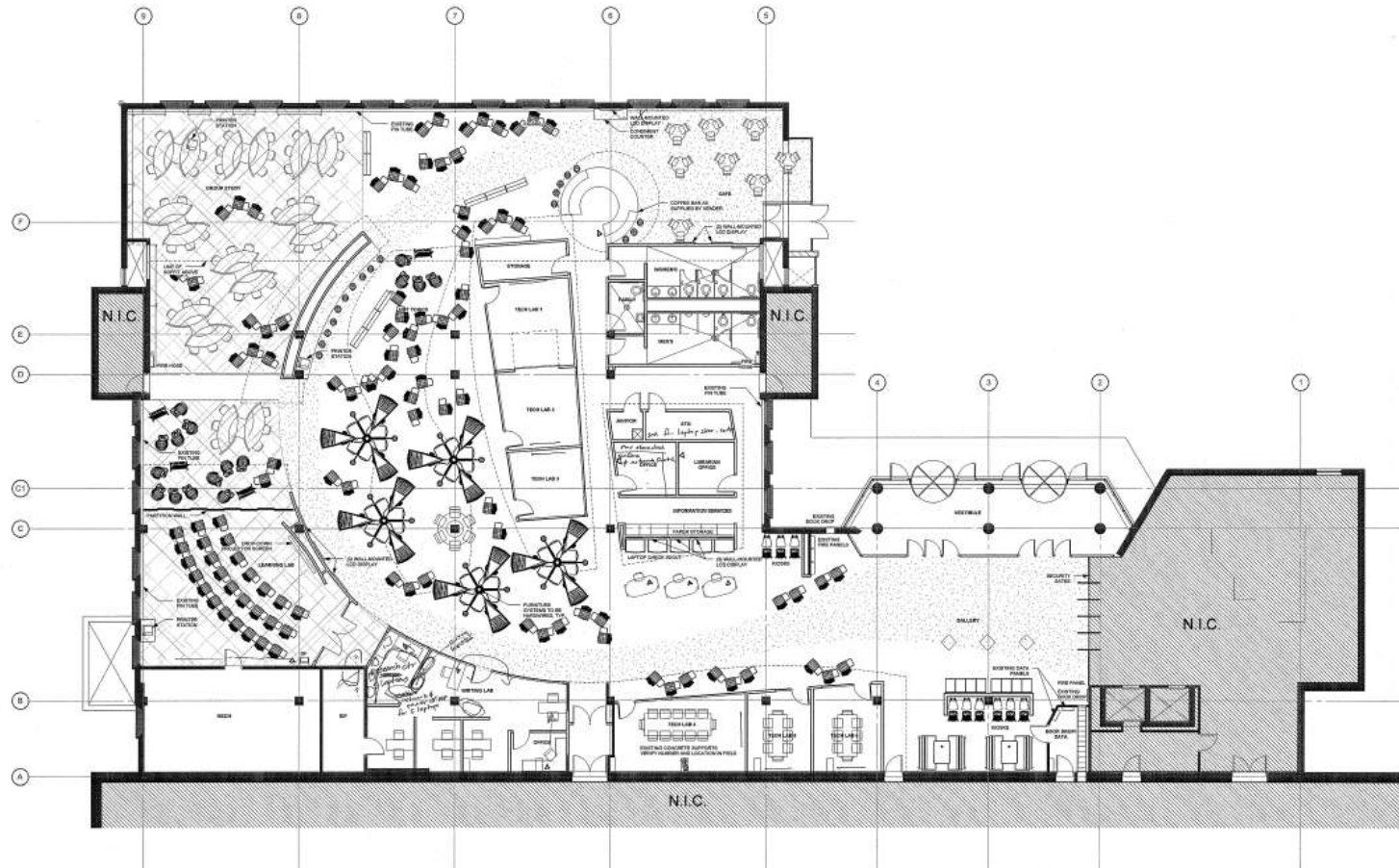
SO IT BEGINS . . .

What to expect and When to expect it

# Designs

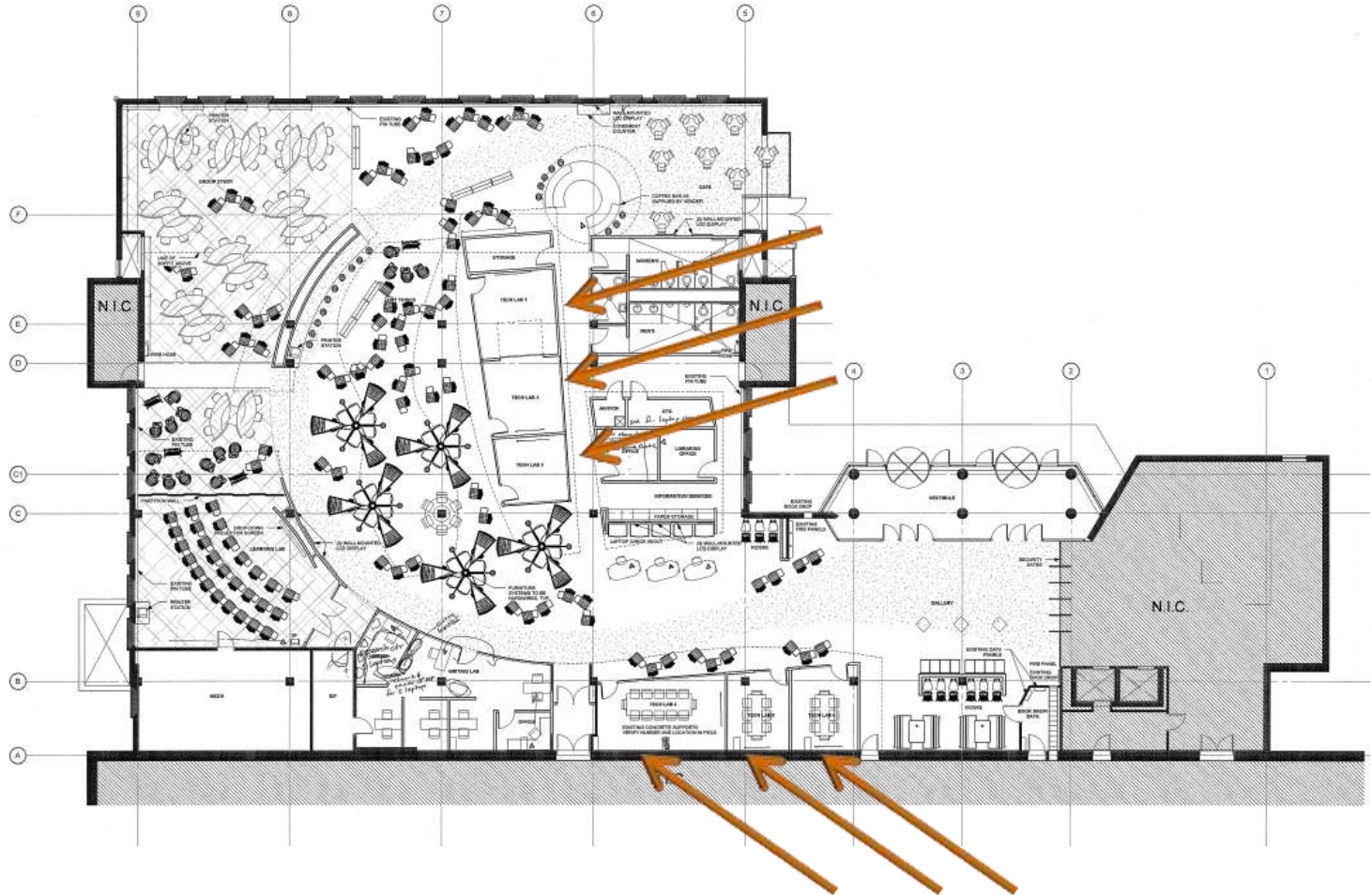
What goes where ? View the plans with images from other institutions with similar design.

# First Floor Design



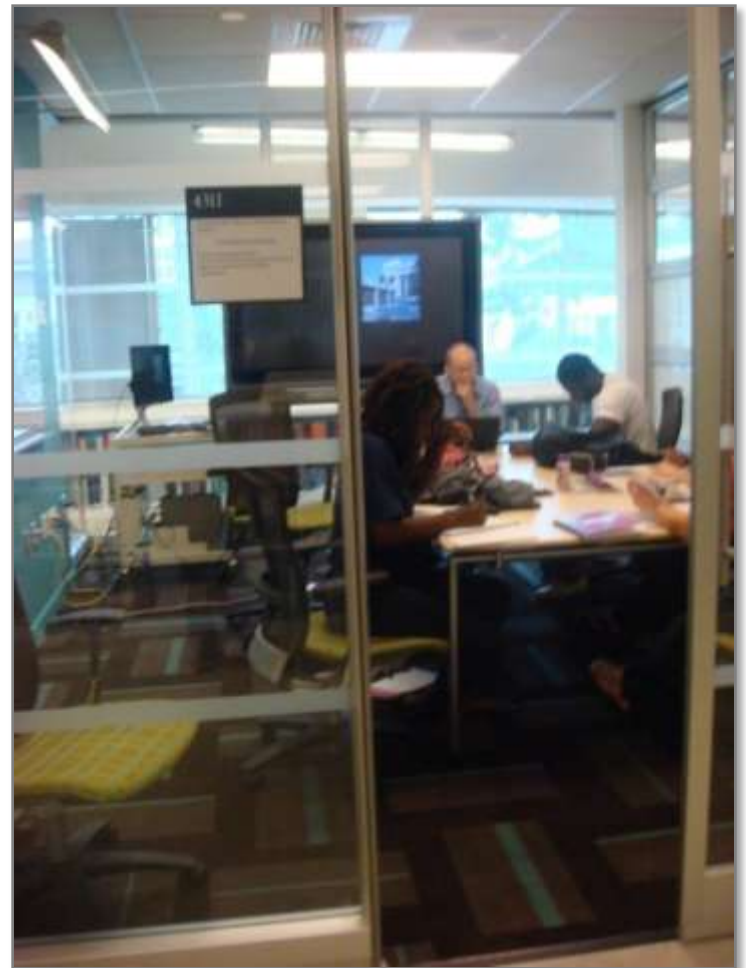


# Team Technology Rooms



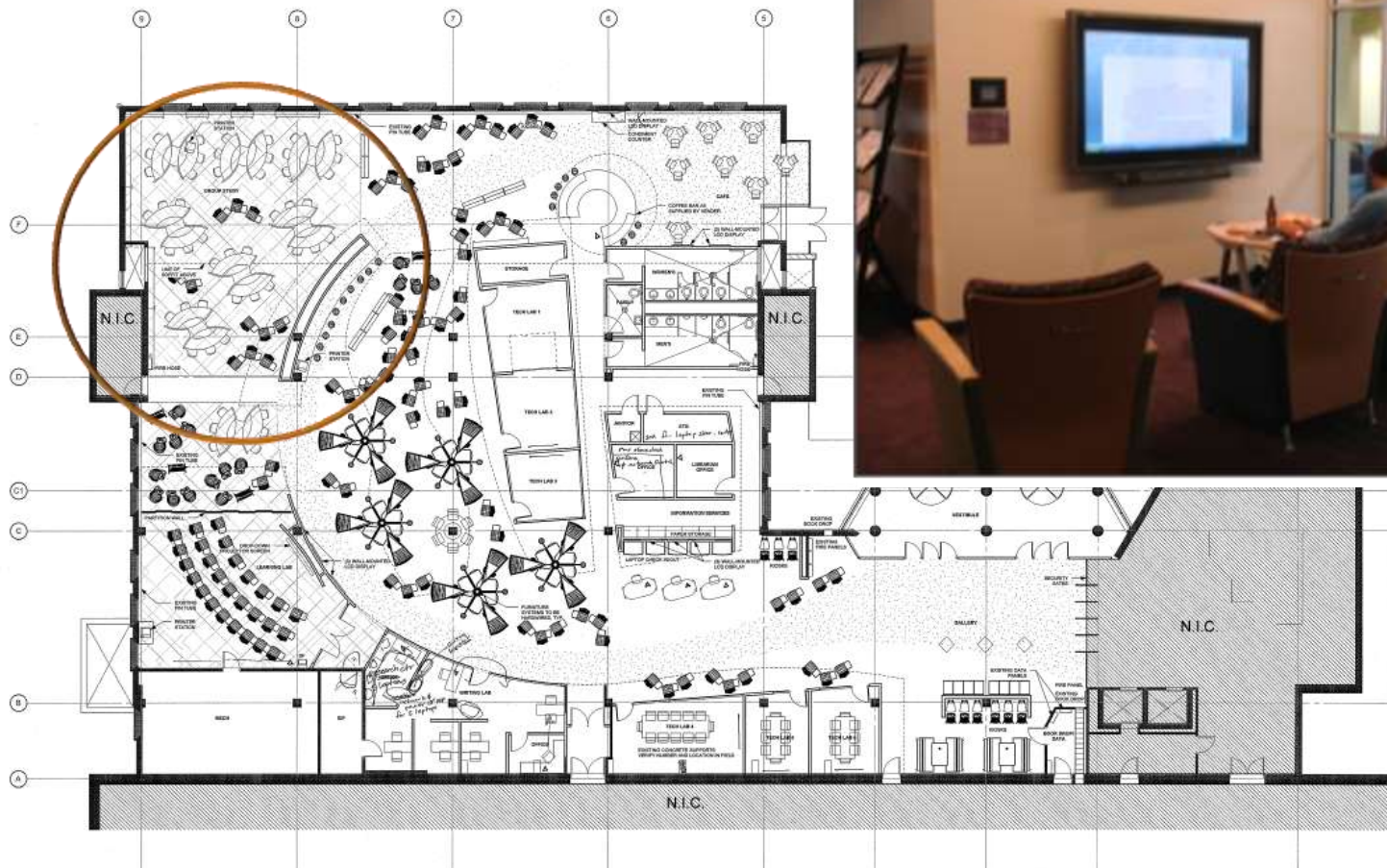
# Team Technology Rooms

- ❑ Divisible space
- ❑ Group sharing software
- ❑ Flat panel display
- ❑ Audio capabilities
- ❑ Meetings and group collaboration
- ❑ Multimedia presentation
- ❑ Videoconferencing
- ❑ Projectors

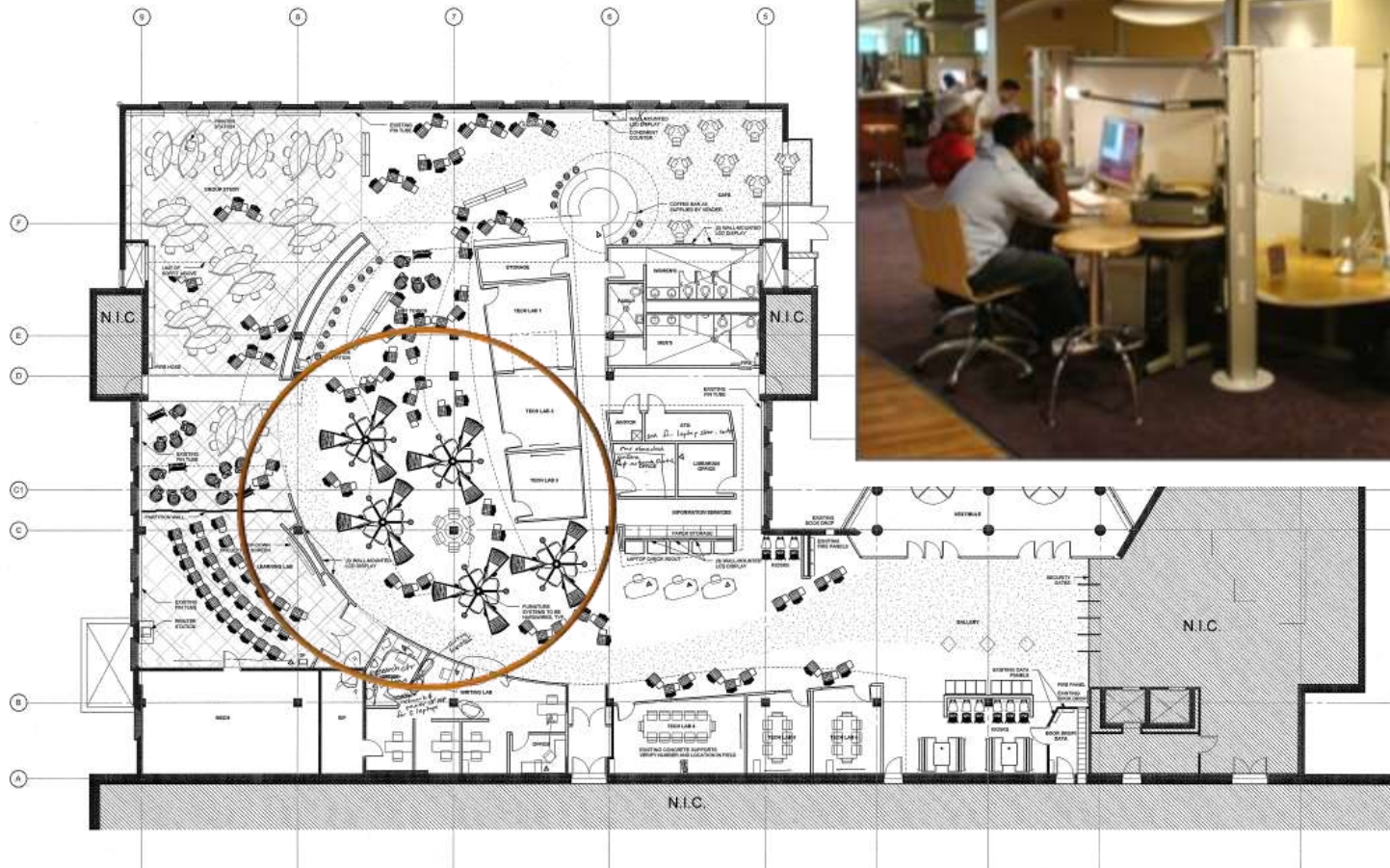




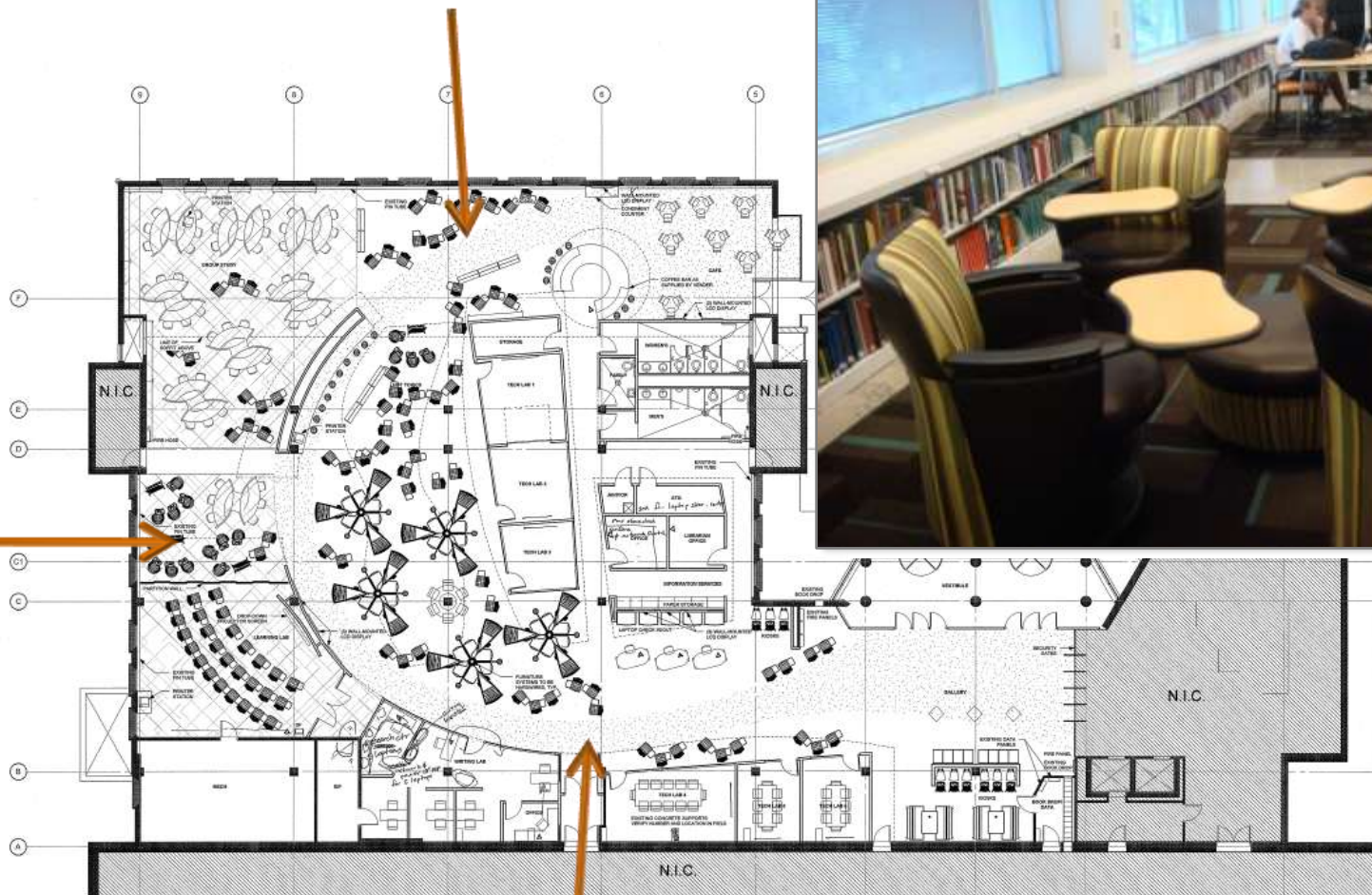
# Collaborative Work Spaces



# Individual Study Area

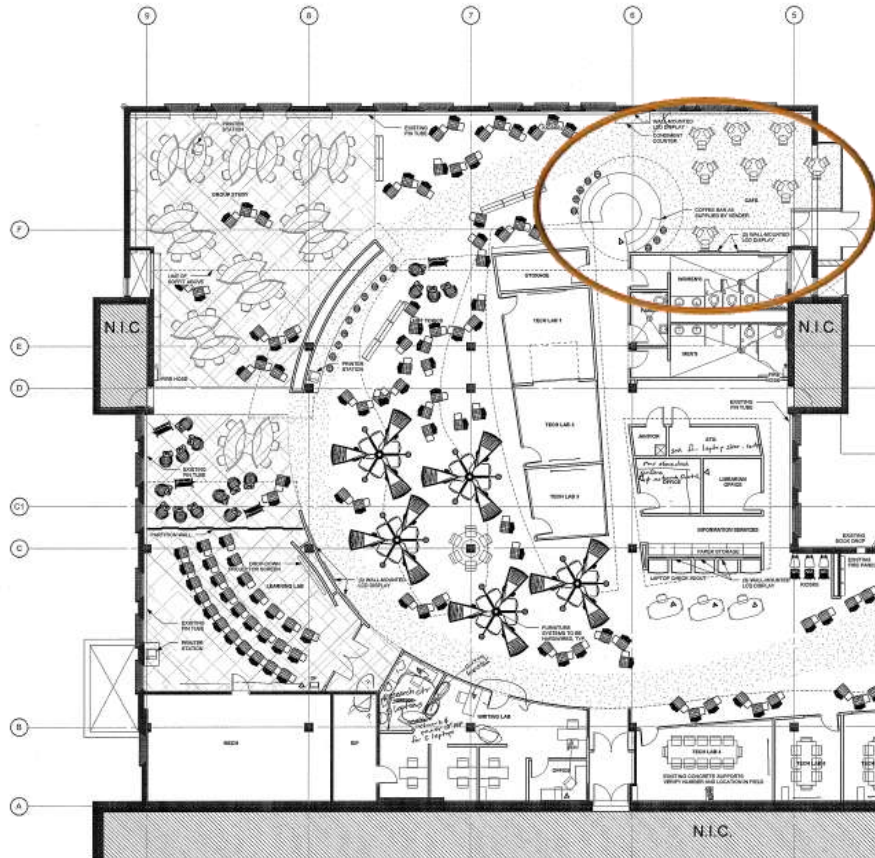


# More Individual Work Spaces

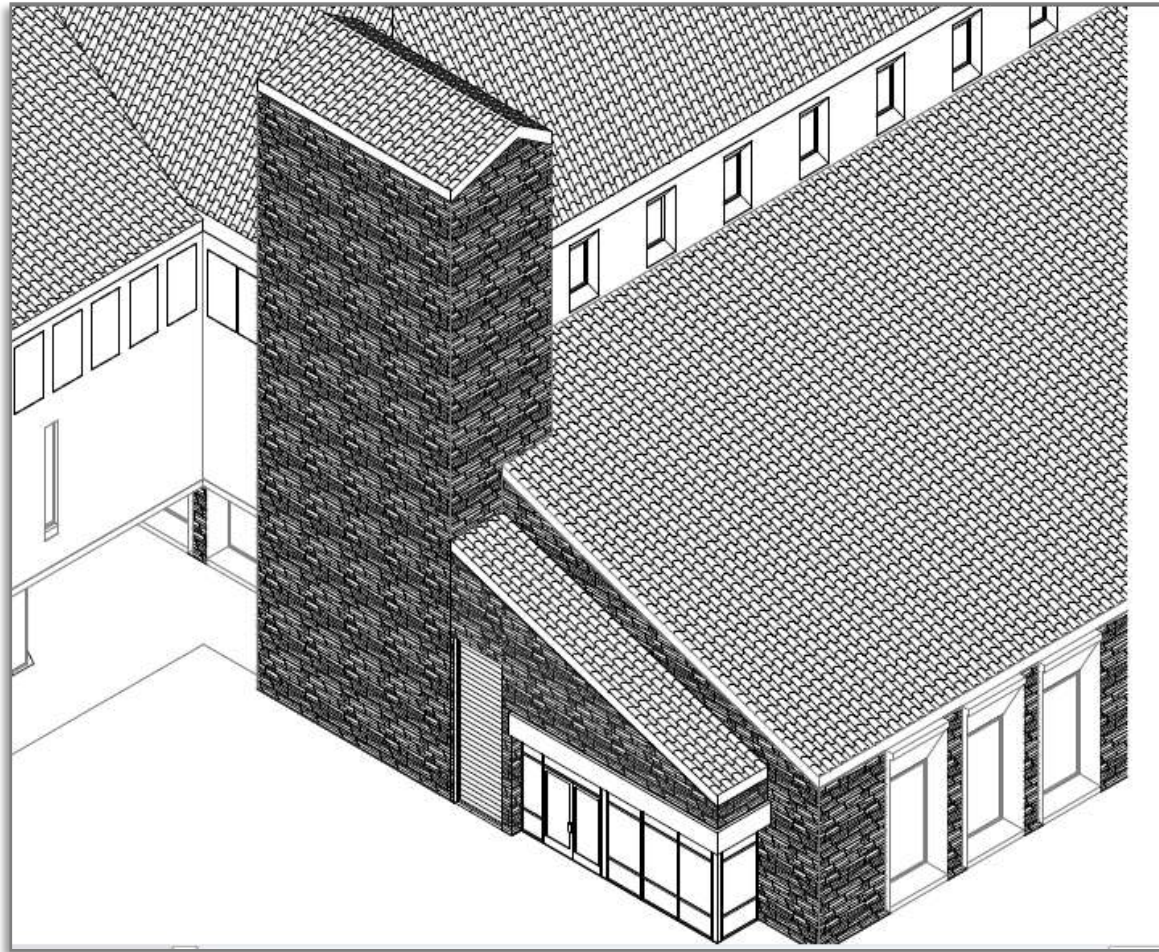




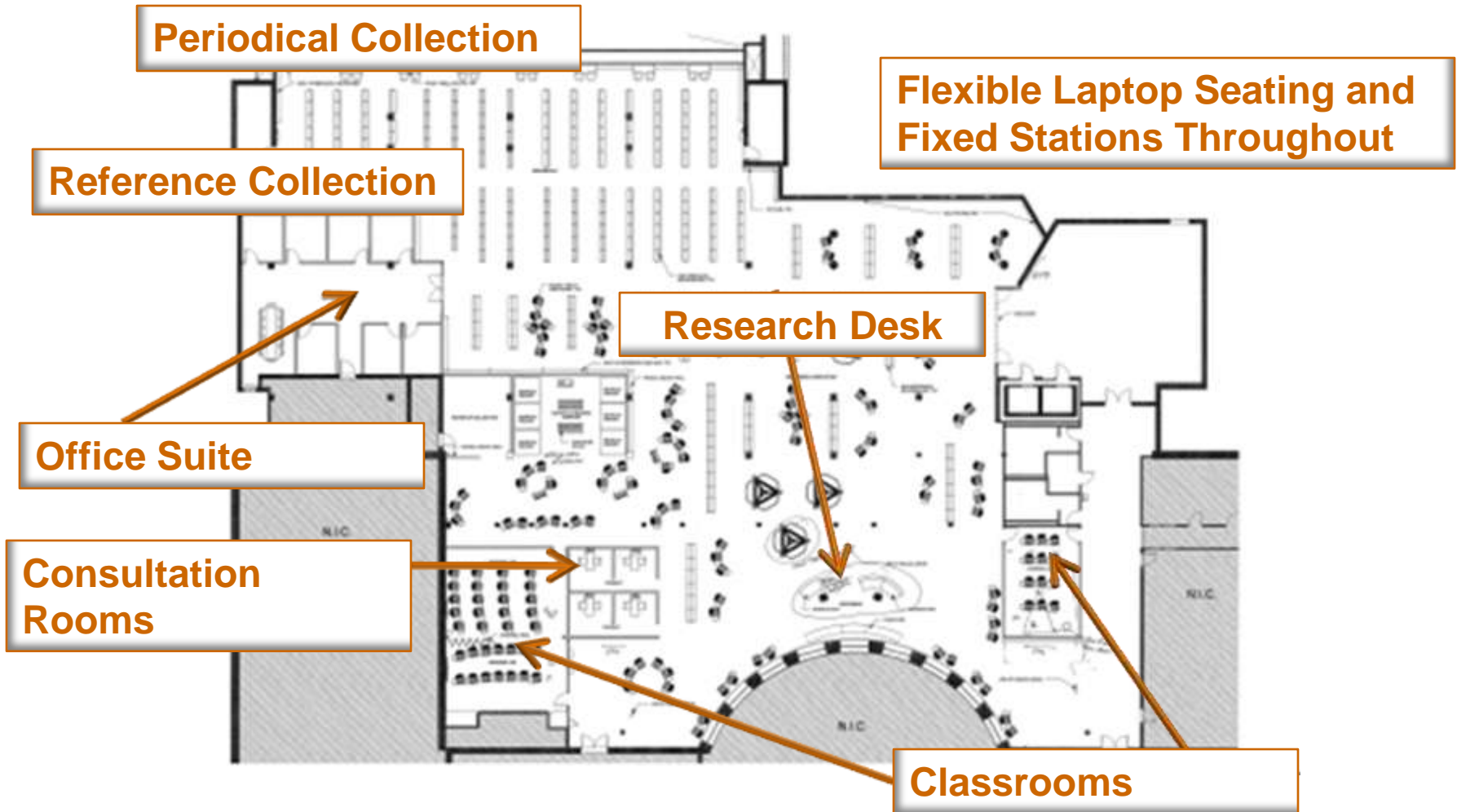
# Café



# Café Entrance

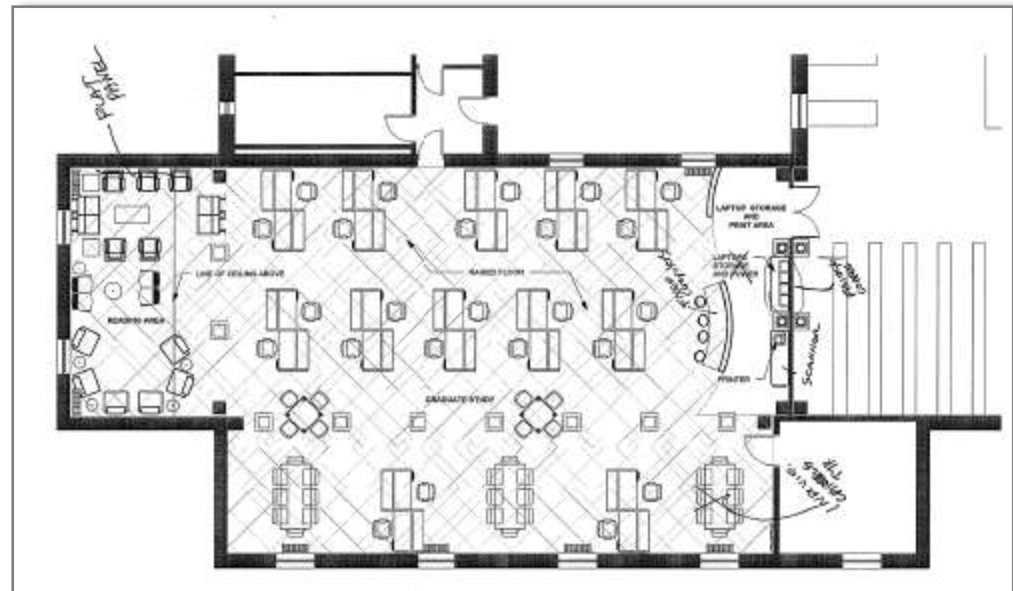


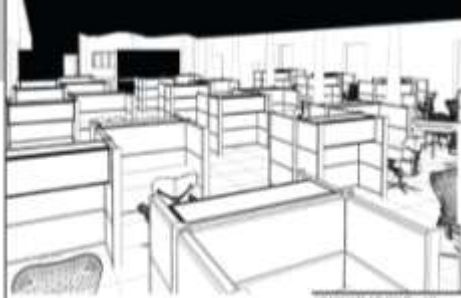
# Second Floor Plan



# 3<sup>rd</sup> Floor Graduate Study

- Study Carrels
- Lockable storage cabinets with power
- Comfy seating area
- Printer/ Scanner





GRADUATE STUDY Third Floor



THIRD FLOOR



REFERENCE PERIODICALS Second Floor



SECOND FLOOR



FIRST FLOOR

Questions / Comments?

Thank you!

STRUCTURAL ENGINEER  
Myrie/Worley Consulting Engineers  
13499 West Colfax Ave.  
P.O. Box 115580  
Lakewood, CO 80215  
303.431.6100

MECHANICAL ENGINEER  
The Beckwith Group  
133-Blue Ave.  
Suite 400  
Pittsburgh, PA 15212  
412.324.0080

1627 58th St.  
Suite 110  
Denver, CO 80231  
303.295.5750